

Flexible solutions for your different and ever changing needs...

Life is forever changing! Change is inevitable!

That is why we believe in the power of change and flexibility...

STOCKART products offer you a wide and flexible variety of choice, this flexibility continues even post-purchase, allowing you to adapt and change your products in line with your constant needs.



Main Stations

The Main Station consists of 4 modules. These modules include; (a) Med Door, (b) Supply Door, (c) Drawer Module, (d) Main Module. Each module may be configured accordingly.



Main Module

17" Touch Screen, Keyboard, Thermal Slip Printer, Thermal Unit Dose Label Printer, Barcode Scanner, Bio ID Scanner, Nurse Tray, Utility Matrix Drawer and Internal Return Bin.



CodePass

Integrated Barcode Scanner, allows control of medication and medical supply inventory movement.



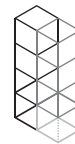
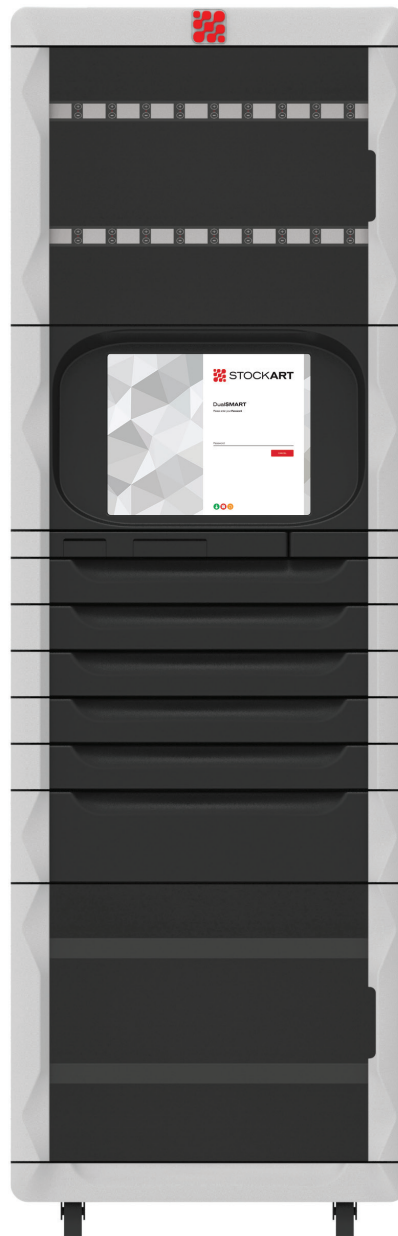
Nurse Tray

Ergonomic nurses counter for usage during preparation of medication and supplies for patients.



LightedPath

The Illuminated Guidance functions as a guide to the correct medication and supply's door, drawer and pocket, providing the user with easy visual guidance.



Towers

Cabinets not including the Main Module are named Towers. One may attach as many towers as one requires to each Main Station. The Tower Modules include; (a) Med Door, (b) Supply Door, (c) Drawer Module. Each module may be configured accordingly.



Weight

Main Stations: ~ 230 kg
Towers: ~ 180 kg



Dimensions (Main Stations and Towers)

Width: 66,4 cm, Depth: 74,5 cm
Height: 203,5 cm



FingerPass

Bio ID Authentication System allows easy and secure access to the stations.



SMARTLabel

Each unit dose receives a barcoded label. Providing platform for verification of the medication administration at the patient's bedside.



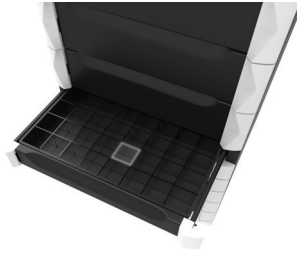
SMARTSlip

Prepares the documentation slip for all executed transactions.

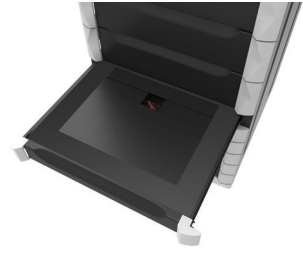
DRAWERS



Matrix Drawer
Standard Matrix Drawer



SMART Matrix Drawer
Improved safety with LightedPath
Illuminated Guidance and ScanBar



Sliding Drawer
Providing highest security access to
each unit dose.

OTHER COMPONENTS



CoolSMART
External Fridge Lock



Internal Return Bin



External Return Bin

While choosing the height of your drawer; single deep or double deep you also have the freedom to choose from a variety of types...

Whichever drawer you choose you can configure them into the Matrix, SMART Matrix or Sliding Drawer.

Matrix Drawer

Once open, access to all medication pockets is possible. Easy access is provided therefore this pocket is perfect for low level security and frequently used medications.



SMART Matrix Drawer

SMART Matrix Drawer includes the LightedPath and ScanBar. With the help of the ScanBar the pockets are electronically perceived and fed into the system. The LightedPath with its illuminated guidance directs the user to the correct pocket and prevents errors.

Uniq Sliding Drawer

The Sliding Drawer carries unit doses for single item medication in each pocket. Only the requested medication pocket and dose is accessible. Provides high level security for narcotic medications.

Multi Sliding Drawer

The sliding drawer may be configured into carrying multiple doses of single item medication. Upon opening, only the requested medication may be accessed. Multiple doses are within this pocket and it provides medium level security.

Flexi Sliding Drawer

The sliding drawer can be configured as "Uniq" as well as "Multi". This configuration is perfect for medication management systems based on variety. It may be used for both medium level and high level security medications.

Headquarters

Triatech Tıbbi Sistemler
Kültür Mah. Suna Sok. No:7 34340
Beşiktaş - İstanbul / Turkey
T: +90 850 288 88 00 F: +90 212 277 33 44
www.triatech.com.tr info@triatech.com.tr

Manufacturing Facility

Triatech Tıbbi Sistemler
Fatih Mah. 1211 Sok. No:1-F 35410
Sarıç, Gazimür - İzmir / Turkey
T: +90 850 288 88 00 F: +90 232 502 29 28
www.triatech.com.tr info@triatech.com.tr